

IMPACT REPORT



2023

A look into LSA's work and impact on the community over the past years.

Table of Contents

03

The Problem

06

About LSA

09

Our Growth

11

Community

14

Donors &
Ways to Help

16

Donate &
Keep in
Touch



The Problem

What the housing crisis means for those with developmental disabilities

Lack of housing is the primary obstacle preventing individuals with developmental disabilities from making the transition to community living and escaping institutionalization or homelessness. The scarcity of affordable housing in the Bay Area worsens these problems, frequently causing caregivers and parents to worry about their child's future once they are no longer there to provide support. The housing crisis in the Bay Area is closely connected to the absence of out-of-home placement options and day services and programs. Community support is essential not only for supplying actual residences but also for guaranteeing a high standard of living and successful community integration for residents.



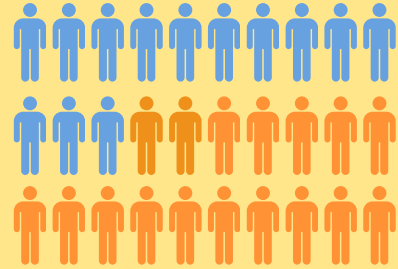
HOUSING ADULTS

WITH DEVELOPMENTAL DISABILITIES

Statistics and data on housing for adults with developmental disabilities

43% OF PEOPLE WITH DD IN CA ARE 22+

Almost 315,000 people receive services for a developmental disability in California. Of this number, almost half (43%) are over the age of 22, typically facing the concern of adult independence and living beyond their current caregivers.



6,243 PEOPLE LIVING WITH DD IN SCC ARE 18+

Of the 10,324 people in Santa Clara County living with disabilities, 6,243 are adults 18 years and older.

61% LIVE AT HOME WITH THEIR PARENT OR GUARDIAN

61% of adults with disabilities are living at home with their parents or guardians due to lack of available and affordable housing. This number has doubled in the past ten years.*



15 LSA HOMES

LSA's 15 homes and day program provide exceptional community living and skill-building opportunities for its residents.



Life Services Alternatives

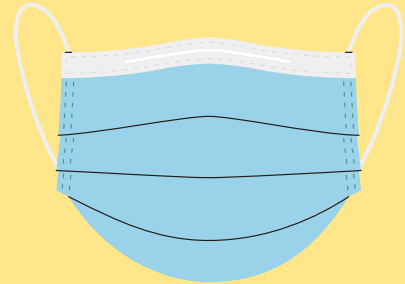
* FAQs about Santa Clara County Measure A and Housing for People with Developmental Disabilities, Autism Society - San Francisco, 2018

CAREGIVER SHORTAGE

Statistics and data on how the caregiver shortage impacts I/DD individuals

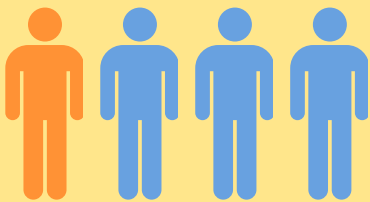
COVID-19 AND THE STAFFING SHORTAGE

COVID-19 has heavily impacted the already existing workforce crisis as the availability of workers continues to shrink. Many I/DD individuals are left without a sufficient number of caregivers, forced to leave their independent lives in group homes.



In the coming years, CA will face a significant shortage of up to 3.2 million paid direct care workers.*

**CA WILL FACE A SHORTAGE OF
3.2 MILLION
PAID DIRECT CARE WORKERS**



**1 IN 4 CAREGIVERS
FALL BELOW THE POVERTY LINE**

LOW WAGES INFLUENCE THE CAREGIVER SHORTAGE

Care workers earn a wage less than half of California's median annual income and one in four caregivers fall below the poverty line.

With the lack of available caregivers, there's a lack of available housing with sufficient staff to give I/DD individuals the quality, independent living they need. Many individuals are on wait lists for residential homes, day programs, transportation services, etc., and are stuck back at home or in larger facilities with more restrictive care and less independence.*

3,500+

I/DD ADULTS AWAIT RETURNING TO THEIR ORIGINAL LIVING SITUATIONS PRE-PANDEMIC



*<https://mpa.aging.ca.gov/Goals/4>

*<https://www.disabilityscoop.com/2022/06/07/people-with-disabilities-feel-left-behind-amid-caregiver-shortage/29885/>

About LSA

LIFE SERVICES ALTERNATIVES

CREATING HOME, CHANGING LIVES

Founded in 2002, Life Services Alternatives offers Community Care Facilities (CCF's) that provide exceptional community living and programs for adults with developmental disabilities. LSA is dedicated to the belief that every individual with developmental disabilities should have the opportunity to fully embrace life within our community. Across fifteen neighborhood homes in Santa Clara County, we provide round-the-clock care for adults with special needs. Through individualized programs that emphasize greater independence, skill development, and self-assurance, we significantly enhance the quality of our residents' lives, empowering them to achieve their maximum potential.



OPENING A HOME

LIFE SERVICES ALTERNATIVES

1. PURCHASING A HOME

Life Services Alternatives acquires homes (either leased or owned), encompassing steps such as renovations, permits, inspections, and gaining full control of the property. The ultimate goal is to obtain a license to operate (Title 22 regulations) from CCL as well as receive approval from SARC.

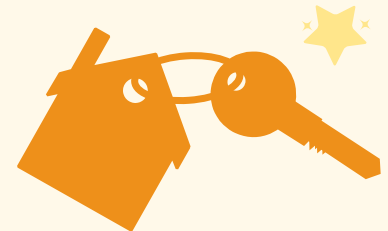


2. RENOVATIONS TO MAKE THE HOME ACCESSIBLE AND COMFORTABLE

Life Services Alternatives makes changes to the home, not only to make it more accessible, but to make it a more comfortable and pleasant space to live in.

3. FURNISHING AND ADDING AMENITIES

Life Services Alternatives also purchases a vehicle, furniture, window coverings, program supplies, household supplies, emergency supplies, office equipment, etc.



4. STAFFING HOMES & RESIDENT SELECTION

Life Services Alternatives recruits the best possible staff and consultants who are a good fit for the program and will best serve our residents. Residents are given a comfortable and exceptionally well-cared-for living situation.

Placement

LSA's resident placement process. Creating new homes for adults with developmental disabilities.

SARC ELIGIBILITY

Residents must first be a SARC client to be eligible for LSA services. Eligible individuals are clients of the San Andreas Regional Center (SARC) or one of the other Regional Centers in CA. They have been through an intake process and have been deemed eligible for services.

APPLICATION

SARC eligible clients must be 18+. Families work with SARC to find the best residential living option for their family member.



OUR GROWTH: TIMELINE

2002

LSA FOUNDED

Founded in 2002 by a group of parents who had a dream of establishing a place in the community for their adult children with developmental disabilities.

2004

RIVERMARK HOMES

First three residential care homes open in John Burns Gardens in Santa Clara.

2007

-

2009

ARFPSHN (962) HOMES

Five additional homes open, where services expand to include medically fragile residents.

2013

CYPRESS HOME & CITP

Cypress Home, a home for independent men, and a day program that focuses on supporting participants fulfill their goals through community activities, opens.

2014

-

2016

HUMBOLT & CAMBRIAN HOMES

Two homes for women open in Santa Clara and Campbell.

2018

RAMITA HOME

Home for young men opens in Campbell.

2020

TAMARACK & CALLE VIENTO HOMES

Home for independent young women opens in San Jose and a home for men opens in Morgan Hill, expanding services to a fourth city.

2021

HATIKVAH HOME

Home is leased from Jewish Silicon Valley.

2023

SPRING HOME

Spring Avenue was purchased 2023 and has been going through renovations. Scheduled to open in 2024.



Our Impact in 2023

72

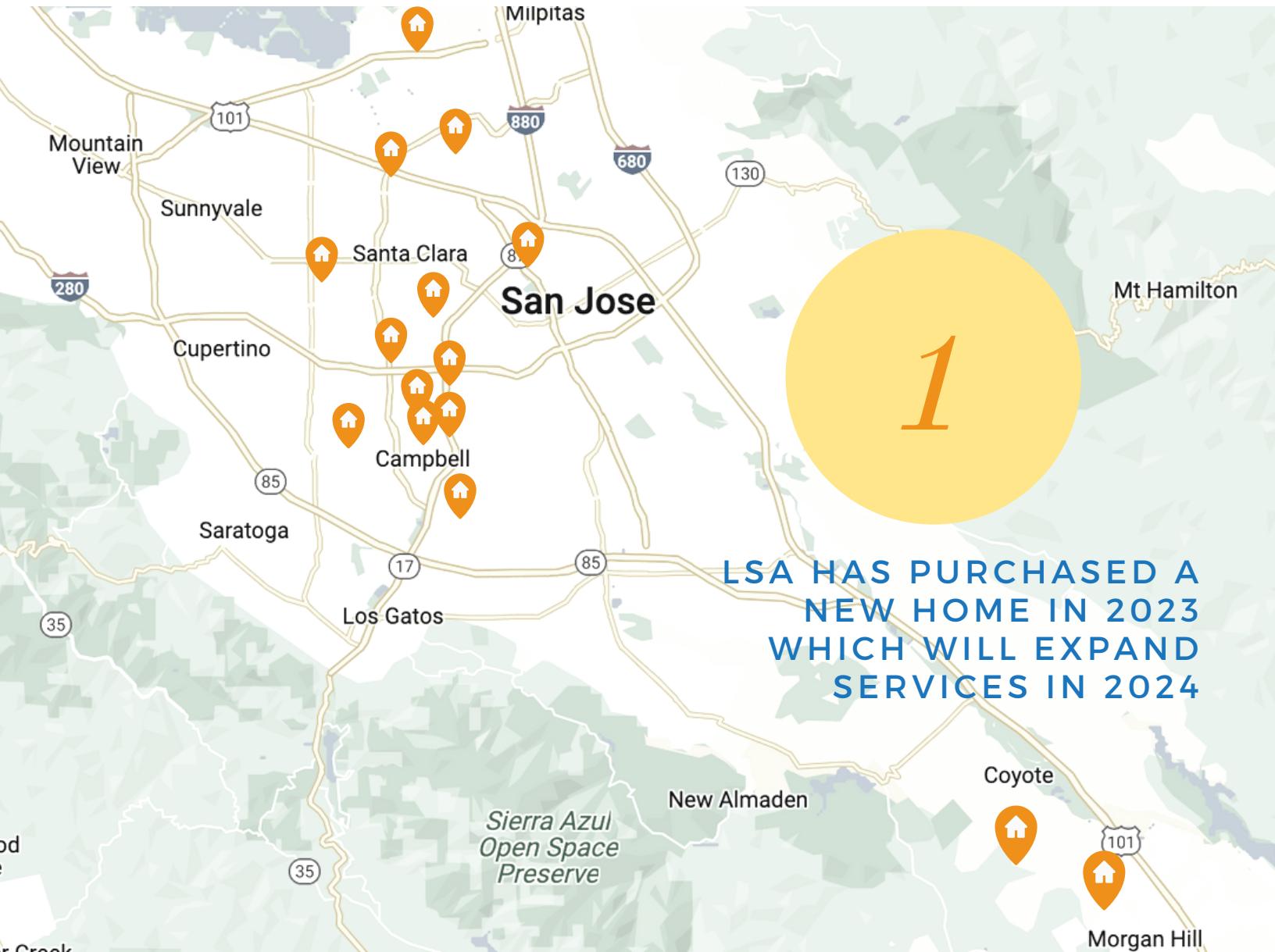
ADULTS LIVING
IN LSA HOMES

23

RESIDENTS LIVING IN A
962 HOME W/ 24-HOUR
MEDICAL SUPPORT

49

RESIDENTS LIVING IN A
LEVEL 4F OR 4C HOME W/
24-HOUR SUPPORT



LSA HAS PURCHASED A
NEW HOME IN 2023
WHICH WILL EXPAND
SERVICES IN 2024

Community Integration Training Program (CITP)

13 PARTICIPANTS

LSA's Community Integration Training Program aims to fill the need in the community for adults moving on to more independent pursuits. CITP empowers individuals to participate in meaningful and enriching community activities and volunteer opportunities that foster independence and self-fulfillment. Through various activities such as gardening, packaging, cooking, cleaning,

setting goals, traveling, maintaining health and fitness, and more, participants acquire the skills to be self-sufficient and enhance their self-confidence. These programs assist individuals with developmental disabilities in gaining greater independence, teaching them about decision-making, self-advocacy, healthy lifestyles, budgeting, the use of public transportation, and other valuable life skills.

"This year came with some new exciting additions to our LSA CITP program. Starting with our skills/cooking classes, which take place every Monday, Wednesday and Friday, to adding a new volunteer site (Animal Assisted Happiness), which our participants are enjoying and learning from! Our program will continue to provide Person-Centered support to our CITP individuals, along with continued growth, and overall FUN in the upcoming new year."

- Juanita Cruz
CITP Administrator



COMMUNITY: OUR COMMUNITY

Our Staff

LSA hires kindhearted and highly qualified individuals to provide exceptional care for our residents. LSA's goal is to be a great place to live and a great place to work.

Staff Trainings & Certifications

- Abuse Prevention
- Consumer Rights
- Continuity of Operations Planning
- Cultural Sensitivity
- Customer Service Training
- Direct Support Professional I & II
- Disaster Resilience & Disaster Relief
- Infection Control
- Medical Diagnoses, Signs, & Symptoms
- Medication Administration
- Risk Management
- Sexual Harassment Training

and more...



23 PARTNERS & SPONSORSHIPS



KENDRA SCOTT



hope services
Transforming lives through Hope since 1952



SAN JOSÉ STATE
SPARTANS



5 CITP PARTNERS

The Health Trust

Agnews Museum

Family Giving Tree

Westhope Presbyterian Church

Animal Assisted Happiness in Sunnyvale

How You Can Help

LIFE SERVICES ALTERNATIVES

CREATING HOME, CHANGING LIVES

Support LSA initiatives and be a part of our journey. Help make a difference in the quality of our residents' lives, enabling them to reach their true potential through a donation of any size, whether that's monetary or time volunteered.

There are various ways to demonstrate support for LSA. In the past, our generous and kindhearted advocates have started their own facebook fundraisers for LSA, left a legacy gift, shared our story, and encouraged others to get involved!



864 DONORS ALL TIME
(INDIVIDUALS & COMPANIES)

\$4.8M IN ALL TIME
DONATIONS

THANK YOU

to our generous donors and supporters

Adarsh Ranganathan
Adobe Inc.
Ahmed Taufiq
Alice & John Davis
Analog Devices Foundation
Ananda Rajagopal
Andrea & Aaron Edelstein
Angela Speulda
Anjali Boaker
Ara Aravamudhan
Arun Khanna
Ashvin Kannan
Celia Moreton
Catherine & Jonathan Ogle
Chris Ooi
Charles Chambers
Chungkun Lee
Claudia Shah
Cupertino Rotary
Dana Hooper & Alicia Swanson
Danny Thomas
David and Kay Griffy
David Chase
Deborah Faryniarz & Stephen Emonds
Deborah Moore
Diane & Chris Fairley
Elsie Fan
Eric Vogel
Esther Fan
Francine & Mark Goodwin
Galina Griffy
Ganesh Iyer
Greg Dalzell
Gerald Fisher
Hannish & Sheetal Vaghela
Harvey & Rosalee Wolfe
Helpers Community
Janelle Greenlee
Jason Eng
Janice Berthold
Jennifer Milani
Jewish Community Federation
Jill & Christopher Escher
Jim & Patty White
John & Devonne Pencer
John & Joan Bertolotti
Jonathan Paluga
Judy Boemer
Kailash Ranganathan
Khalid Darwish
Karyn Bordoni
Kim Richman
Kirkorian Family Foundation
Krishnan Subrsmani
Kottayam Murugan
Laurie & Michael McGrath
Laura Hofstadter & Leonard Shar
Lee & Akiko Nelson
Liu-Jen Chu
Los Gatos Rotary Charities
Louis & Julie Cardillo
Madelyn Minchen
Maniam & Margaret Algaratnam
Mark & Amy Milani
Mark Barrenechea
Mary Ann Metzger
Mary Wang
Maurice Leibenstern
Matthew Norris
Michael & Liz Phillips
Morgan Hill Community Foundation
Mission City Community Fund
Neeta Shinde
Noelle Tardieu
Paavani Putta
Paul & Barbara Gentzkow
Pauline Persley
Phyllis Ishida
Prime Electric
Rachel Paley
Ranga & Madhu Ranganathan
Ray & Julie DuBois
Richard & Rebekah Penrose
Richard Hauck
Richard Yee
Richards Family Charitable Foundation
Robert and Renee Marshalla
Rodolfo Salaya
Roger & Patricia McCandless
Robert Lawson
Rohini Prasana
Ross & Susan Condit
Sachin & Kalpana Thatte
Sally & Brian Mickel
Sharad Gupta
Steven & Kelly Minchen
Subramanian Kumaraswamy
Susan LeRitz & Allan Palmer
The Allisdon Lee Condit Foundation
The Sovereign Order of St. John
Todd & Holly Mickel
Tina & Walter Underwood
Trammell Crow Company
Tracy & David Hovda
Vijaya Maken Chenna
Varian Medical Group
Val & Carolyn Dixon Minerals Trust
Wilson, Sonsini, Goodrich & Rosati Foundation



260 W Hamilton Ave
Campbell, CA 95008



SCAN ME

Donate

Thank YOU for supporting LSA!
Together WE are creating home, changing lives

to donate:

[HTTPS://BIT.LY/LSADONATE](https://bit.ly/lsadonate)

Let's Stay Connected



info@lsahomes.org



www.lsahomes.org



@lsahomes



@Life Services Alternatives

